

# Alaska Department of Fish and Game

Habitat Section  
Southeast Region



## 106-22-10080 Tributary 6

## ADDITION

**Water body name:** Marin Creek

**Survey date:** 8/25/2025

**Quad:** Petersburg A-2

**Species & Lifestage:**

**Upper Reach Latitude:** 56.175303 **Longitude:** -132.566596

**Survey crew:** TE, CD

**Lower Reach Latitude:** 56.177634 **Longitude:** -132.571425

**Findings:** We surveyed this uncataloged stream from the road using a backpack electrofisher, baited minnow traps and GPS and captured juvenile coho salmon and Dolly Varden. This stream crosses the road via an old 48 inch rusted-out corrugated metal culvert that is perched 1.5 ft at the outlet. Juvenile coho salmon were caught above the pipe though, so it must not be a barrier to fish at all flows. Downstream of the pipe, the stream is shallow with mostly cobble substrate and flows through an area of clear cut. Upstream of the pipe, the stream narrows and becomes incised with mossy cut banks and flows subsurface in sections (Table 1; Figures 1–3).

**Recommendations:** Add this uncataloged stream to the anadromous waters catalog up to waypoint 1026 for rearing coho salmon (Figure 4).

**Nomination:** Pending

Table 1.–106-22-10080 Tributary 6 survey data.

Waypoint	Latitude	Longitude	Notes	Stream Width ft	Stream Substrate	Habitat Features	Gradient %	Sample Effort	Sample Results
1007	56.175446	-132.566926	Resetting upstream. First 2 1/2 panels of pipe inlet are rotted out, see photo. Approximately 48 inch corrugated metal pipe with flow throughout, perched about 1.5 feet upstream water is mostly stagnant with little flow and meanders through forest. Downstream of pipe has cobbles and boulders. Set minnow trap downstream.		Cobble		2-4	MT	3 CO 1 DV
1026	56.175413	-132.566608	Trap set upstream of perched culvert.	2-4	Fine Organic		1-2	MT	2 CO 5 DV
1028	56.175249	-132.566234	Small incised channel with low flow. Small woody debris throughout and cut banks. Minimal pools for rearing. Channel goes subsurface and reappears periodically.	1-2	Fine Organic	Cut Banks SWD	1-2	EF	1 DV
1029	56.1751	-132.565957				Cut Banks SWD			1 DV
1030	56.174955	-132.565665	Bed goes dry here. Channel also goes sub surface and reappears. Periodically.	1-2	Fine Organic	Cut Banks SWD	1-2	EF	



Figure 1.—Juvenile coho salmon and Dolly Varden caught at waypoint 1007.



Figure 2.—Perched culvert at waypoint 1007.



Figure 3.—Channel upstream of road crossing at waypoint 1026.

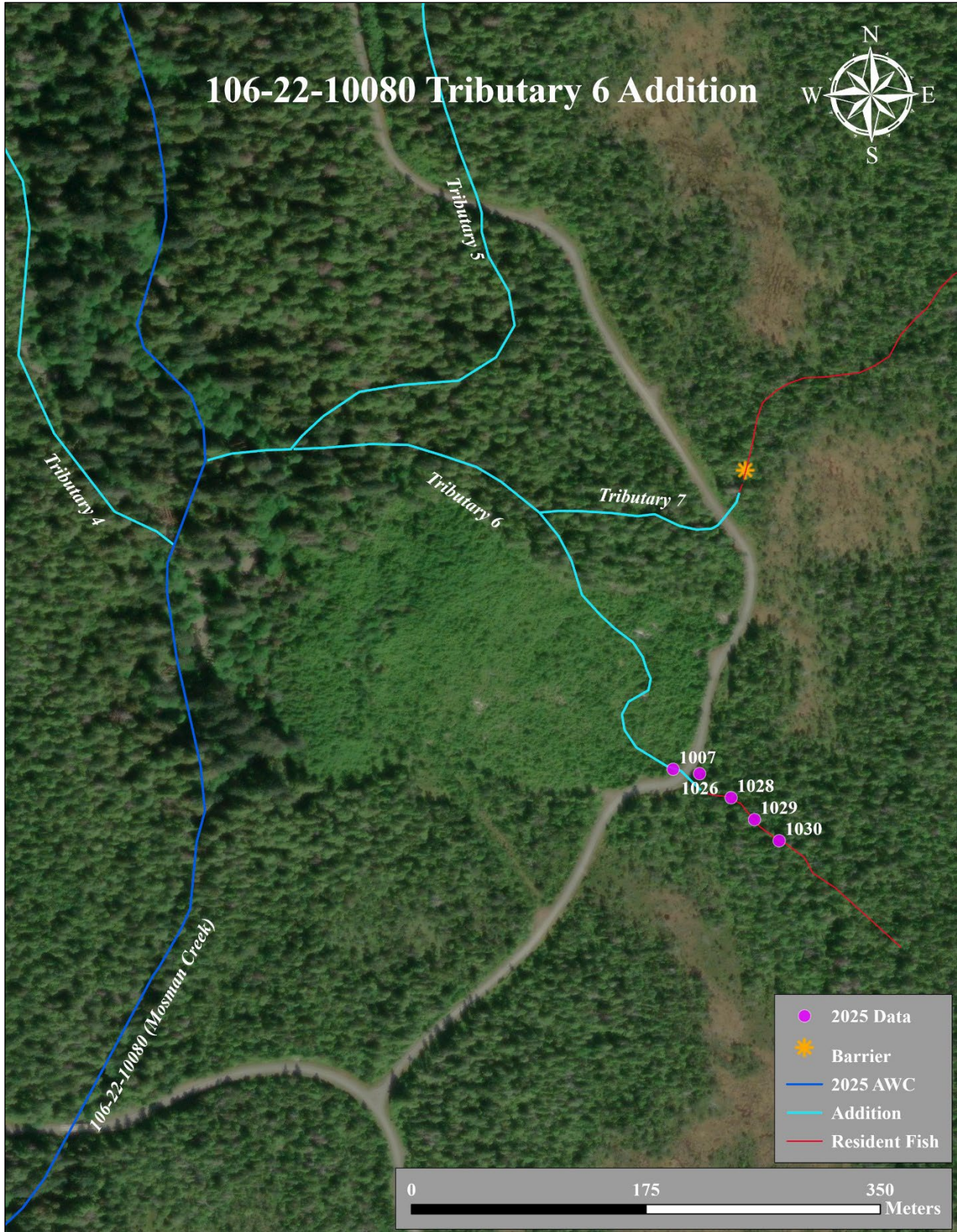


Figure 4.—106-22-10080 Tributary 6 Addition map.